

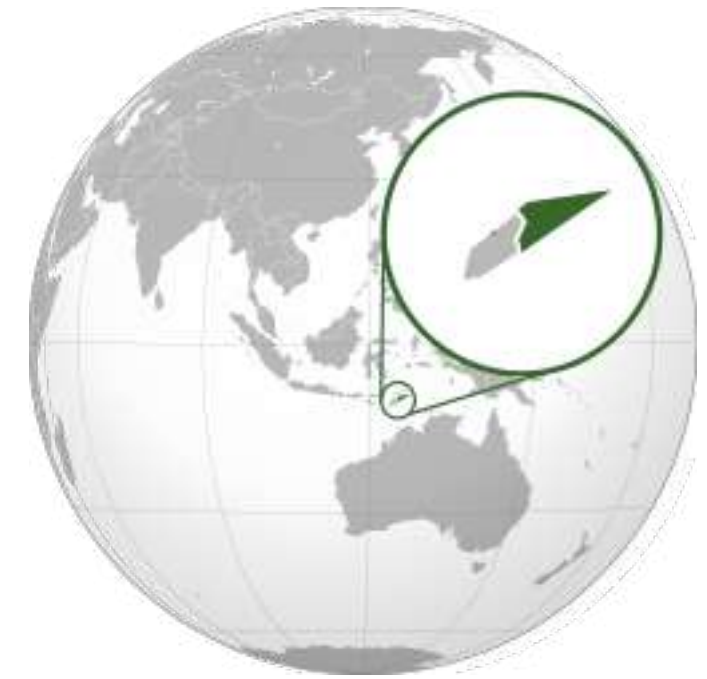


Teachers College and School, Gleno
Escravas da Eucaristia - Missionárias de Nazaré

THE PROJECT

Teachers College and School, Gleno

TIMOR LESTE



Human Development Index = 133 (out of 188)

Poverty rate= 41.8%

42% of primary school children suffer from chronic malnutrition

Massive post war displacement of population

2017

Population = 1.296.311

45% of the population will be below the age of fourteen by 2020

Pre Primary school enrollment: 16,51%

Primary school enrollment: 78,69%

Secondary school enrollment: 59,32%

One of the most pressing needs in Timor-Leste at present is the provision of qualified and competent teachers **75% of teachers remain unqualified**

STUDENT CENTERED EDUCATIONAL MODEL

... based on the Theory of Multiple Intelligences with:

1. **A curriculum for the 21st Century** (interdisciplinary, contextualized, global), with **active methodologies** (that use technology as tools) and **authentic assessment** that is another way of learning.
2. **New roles of teachers and students:** teachers are designers of learning experiences and coaches and students are creators with much more autonomy in the design of their learning plan.
3. A type of **organization** in terms of time, groupings (not only students but also teachers who teach in teams), sessions and integration of subjects towards interdisciplinarity.
4. **Learning spaces:** the physical space is very flexible but also the digital space is prepared so that it allows learning to happen everywhere and at any time.

The teachers in will be able to experience in the Institute the same type of learning experience as they will be designing for their future students.



Masterplan

Area Statement

	BLOCKS		AREA (IN SQM)		
		CAPACITY	GROUND FLOOR	1ST FLOOR	TOTAL
1	TEACHERS TRAINING INSTITUTE	400	1965	1425	3390
2	SCHOOL-KINDERGARDEN	180	1210	0	1210
3	SCHOOL-PRIMARY (1-6)	360	972	865	2205
4	SCHOOL-SECONDARY (7-12)	360	1832	1651	2986
5	CAFÉ+ MUSIC + LIBRARY		554	500	1054
6	CHAPEL	100	460	0	400
7	RESIDENTIAL (VISITING STUDENTS)	20	430	430	860
8	COMMUNITY HUB		120	0	120
9	CENTRAL KITCHEN		500		500
	TOTAL			(in sqm)	32578





Design program - Teachers training college & K-12 school

Capacity and Organization

Teachers Training College	400		400 (@ 25 students / cohort)
Kindergarten	180		180 (@ 30 students / cohort)
Primary (Grades 1-6)	90	90	360 (@ 30 students / cohort)
2 Learning Communities	90	90	
Middle & High (Grades 7-9)	90	90	360 (@ 30 students / cohort)
(Grades 10-12)	90	90	
4 Learning Communities			
TOTAL STUDENT STRENGTH			1300



BUDGET - Teachers training college & K-12 school

Teachers Training College	4.378.000 €	400 (@ 25 students / cohort)
Kindergarten	1.495.000 €	180 (@ 30 students / cohort)
Primary (Grades 1-6)	2.340.000 €	360 (@ 30 students / cohort)
Secondary (Grades 7-9) (Grades 10-12)	4.365.000 €	360 (@ 30 students / cohort)
TOTAL STUDENT STRENGTH		1300
Other spaces (kitchen, dining room, library, community center, health center)	2.390.000 €	
Formation house	1.875.000 €	
Chapel	580.000 €	



Floor Plan | Kindergarten



LEGEND

- 01 Arrival Court
- 02 Reception
- 03 Principal's Office
- 04 Arts & Crafts
- 05 Restrooms
- 06 Gardening Deck
- 07 Teachers' Collaboration
- 08 Sensory Space
- 09 Reading Zone
- 10 Mathematics Corner
- 11 Music Hall
- 12 Outdoor Deck
- 13 Curiosity Centre
- 14 Meditation Space
- 15 Pantry
- 16 Learning Suite
- 17 Physical Activities
- 18 Tree House
- 19 Gymnastics
- 20 Story Telling
- 21 Dining / Assembly Area

Learning Studio | Perspective

View



Central Gathering Inspiration

Seating inspired from nature.
Magnetic seats that can be placed on the wall when not in use.
Organic shaped stage to complement the theme.



Learning Commons | Perspective







Play Areas Inspiration

Natural Materials

Creating environments which allow kids to take part in hands-on activities-discovering & exploring the various elements in nature





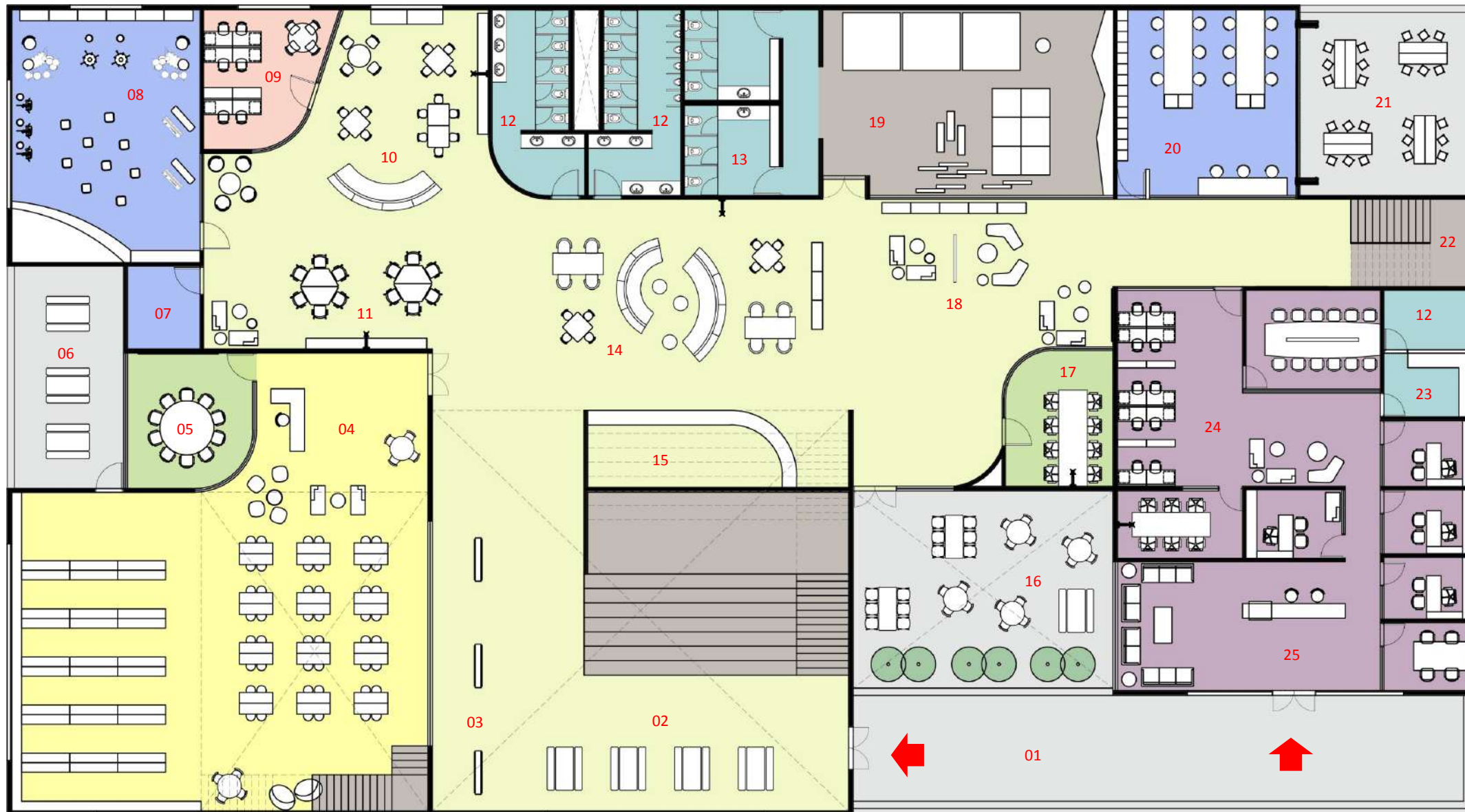


Early Years Block - Indoor Outdoor connections





Level 00



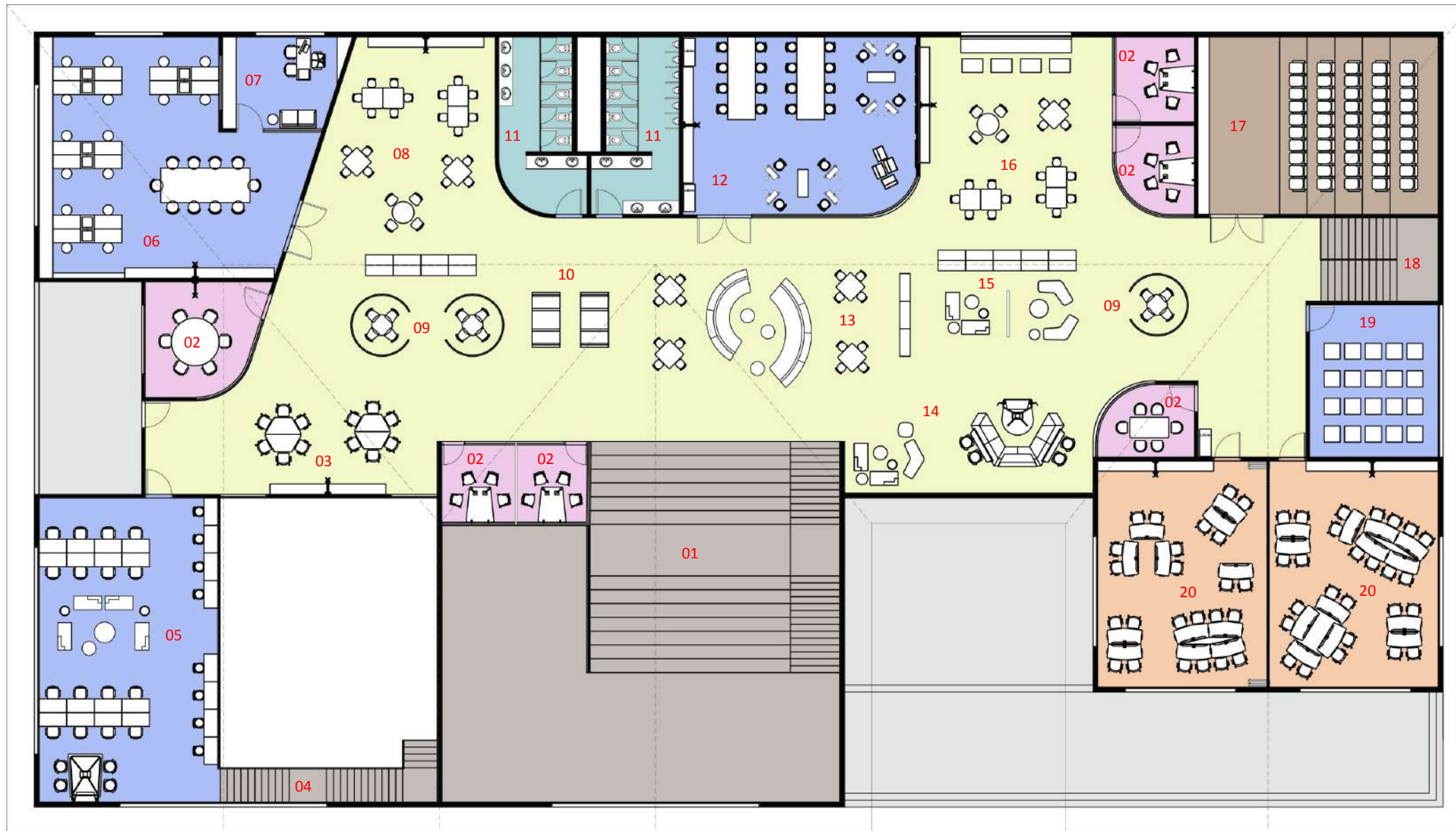
LEGEND

- 01 Arrival Court
- 02 Lounge
- 03 Arts/Projects Exhibition
- 04 Library
- 05 Meeting Room
- 06 Outdoor Reading Area
- 07 Practice Room
- 08 Music Studio
- 09 Teachers' Collaboration
- 10 Learning Commons
- 11 Presentation
- 12 Restrooms
- 13 Showers & Lockers
- 14 Reading Zone
- 15 Cafeteria
- 16 Outdoor Café Seating
- 17 Conference Room
- 18 Discussion Area
- 19 Gymnastics
- 20 Maker Lab
- 21 Maker Yard
- 22 Fire Escape Staircase
- 23 Pantry
- 24 Administration Office
- 25 Reception Lounge



Floor Plans | Teachers' Training Centre

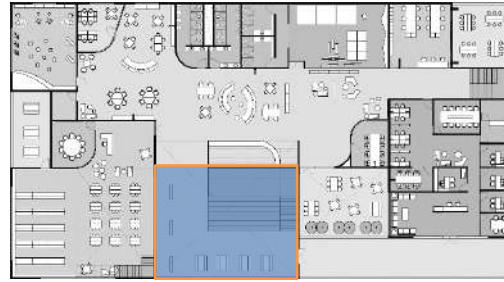
Level 01



LEGEND

- 01 Feature Staircase
- 02 Small Group Discussion
- 03 Presentation
- 04 Steel Staircase
- 05 Digital Media
- 06 Science Lab
- 07 Preparation Area
- 08 Learning Commons
- 09 Group Pods
- 10 Booth Seating
- 11 Restrooms
- 12 Arts Studio
- 13 Reading Zone
- 14 Huddle Space
- 15 Discussion Area
- 16 Workshop
- 17 Auditorium
- 18 Fire Escape Staircase
- 19 Meditation Hall
- 20 Learning Studio

Main Lobby Inspiration



Feature Staircase

A multifunctional design device that acts as a means for vertical transportation as well as a hang-out space for the students.



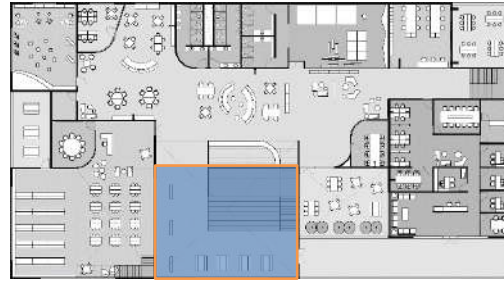
Main Lobby Inspiration

Entry Lounge

The double height entry lounge is welcoming as well as imposing, thereby evoking an institutional feel.

The lounge, well lit by natural light from the skylights above, is flanked by the feature staircase on one side and the arts/exhibition gallery on the other, thereby providing an excellent visual and spatial experience to the institute.

This space is will be the hub/heart of the institute.



Main Lobby Perspective View



Library

Perspective View



Learning Commons

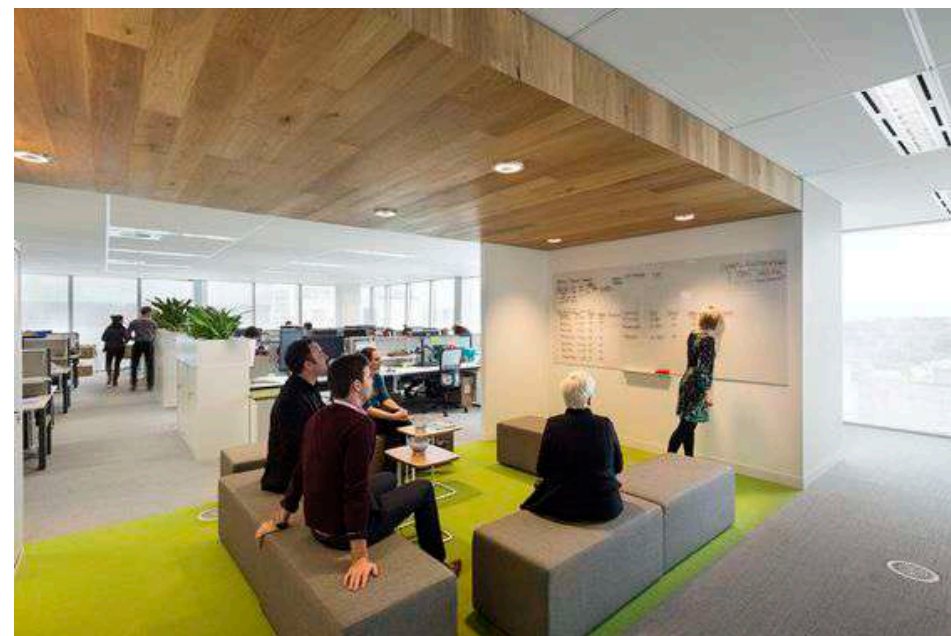
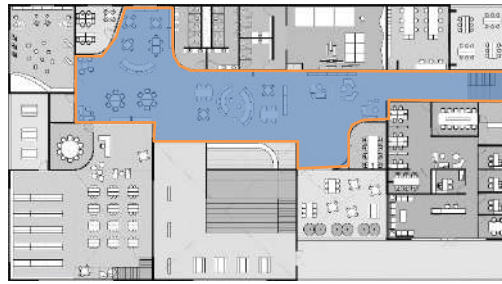
Inspiration

Creating break-out spaces with flexible furniture helps students socialize and collaborate better.

A range of seating from 2 chairs and a table to large workbenches where 10-12 people can collaborate is envisaged in this space. Huddle spaces, large group seating (conference style) and stepped seating for more informal interaction has been provided.

Writable surfaces are provided in every corner for brainstorming activities and collaboration.

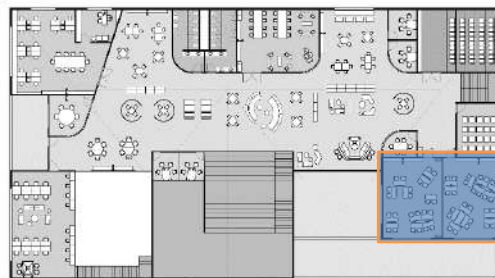
Local art on columns add color to the space.



Learning Studios

Inspiration

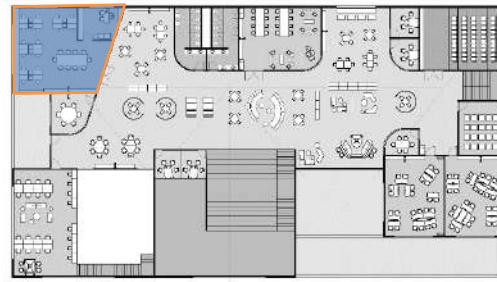
Creating flexible spaces is essential for efficient usage of precious real estate. Operable walls between two studios allow flexibility to create larger space and turn into individual spaces by closing them when required. These sliding walls serve dual purpose of writable surface and tackable area in addition to functioning as separation between the spaces. Flexible furniture is proposed in these studios to facilitate collaborative setting when needed.



Science Lab

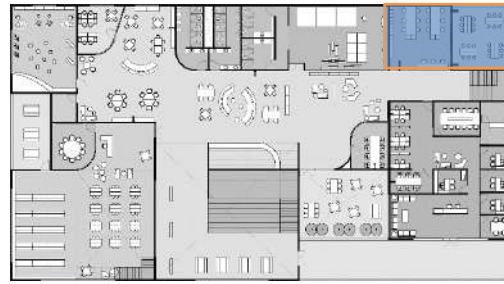
Inspiration

Interiors of Science lab is envisioned to be clean and simple. Epoxy flooring for easy cleaning and chemical resistant is being proposed. The lab worksurface is proposed along the walls which allow collaboration and create the central area for lecture as well.

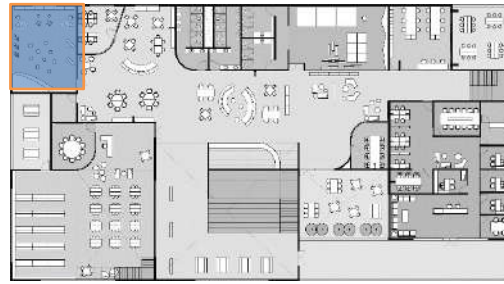


Maker Lab Inspiration

Wooden flooring with large maker tables. Sliding folding wall extends Maker Space to Yard. Wooden Pegboard on wall to house instruments. Computer station along wall for programming as well.



Music Studio Inspiration

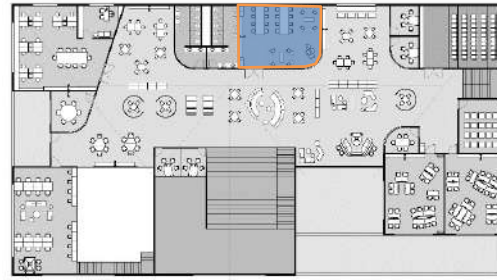


Wooden acoustical panels in practice room in wave form to represent musical



Arts Studio Inspiration

Long benches and easels with connection to commons for collaboration and spill out. Diffused north light creates appropriate space for artwork.



Auditorium Inspiration

Wooden paneling on walls and ceiling with slits had been proposed for acoustics and lighting in the auditorium that can house 50 people.

