



Teachers College and School, Gleno  
Escravas da Eucaristia - Missionárias de Nazaré



# THE PROJECT

---

**Teachers Training College and School, Gleno**

# TIMOR LESTE



**Human Development Index = 133 (out of 188)**

**Poverty rate= 41.8%**

**42% of primary school children suffer from chronic malnutrition**

**Massive post war displacement of population**

**2017**

**Population = 1.296.311**

**45% of the population will be below the age of fourteen by 2020**

**Pre Primary school enrollment: 16,51%**

**Primary school enrollment: 78,69%**

**Secondary school enrollment: 59,32%**

**One of the most pressing needs in Timor-Leste at present is the provision of qualified and competent teachers **75% of teachers remain unqualified.****

# STUDENT CENTERED EDUCATIONAL MODEL

Where the students lead their own learning journey to develop the competences needed to thrive in the 21st Century,

1. **A curriculum for the 21st Century** (interdisciplinary, contextualized, global), with **active methodologies** (that use technology as tools) and **authentic assessment** that is another way of learning.
2. **New roles of teachers and students:** teachers are designers of learning experiences and coaches and students are creators with much more autonomy in the design of their learning plan.
3. A type of **organization** in terms of time, groupings (not only students but also teachers who teach in teams), sessions and integration of subjects towards interdisciplinarity.
4. **Learning spaces:** the physical space is very flexible but also the digital space is prepared so that it allows learning to happen everywhere and at any time.

The teachers in will be able to experience in the Institute the same type of learning experience as they will be designing for their future students.











# Masterplan

## Area Statement

	BLOCKS		AREA (IN SQM)		
		CAPACITY	GROUND FLOOR	1ST FLOOR	TOTAL
1	TEACHERS TRAINING INSTITUTE	400	1965	1425	3390
2	SCHOOL-KINDERGARDEN	180	1210	0	1210
3	SCHOOL-PRIMARY (1-6)	360	972	865	2205
4	SCHOOL-SECONDARY (7-12)	360	1832	1651	2986
5	CAFÉ+ MUSIC + LIBRARY		554	500	1054
6	CHAPEL	100	460	0	400
7	RESIDENTIAL (VISITING STUDENTS)	20	430	430	860
8	COMMUNITY HUB		120	0	120
9	CENTRAL KITCHEN		500		500
	TOTAL			(in sqm)	32578

# BUDGET - Teachers training college & K-12 school

Teachers Training College	4.900.000 €	400 (@ 25 students / cohort)
---------------------------	-------------	------------------------------

Kindergarten	1.996.000 €	180 (@ 30 students / cohort)
--------------	-------------	------------------------------

Primary (Grades 1-6)	2.608.540 €	360 (@ 30 students / cohort)
----------------------	-------------	------------------------------

Secondary (Grades 7-9) (Grades 10-12)	4.876.200 €	360 (@ 30 students / cohort)
--	-------------	------------------------------

<b>TOTAL STUDENT STRENGTH</b>	<b>1300</b>
-------------------------------	-------------

Other spaces (kitchen, dining room, library, community center, health center)

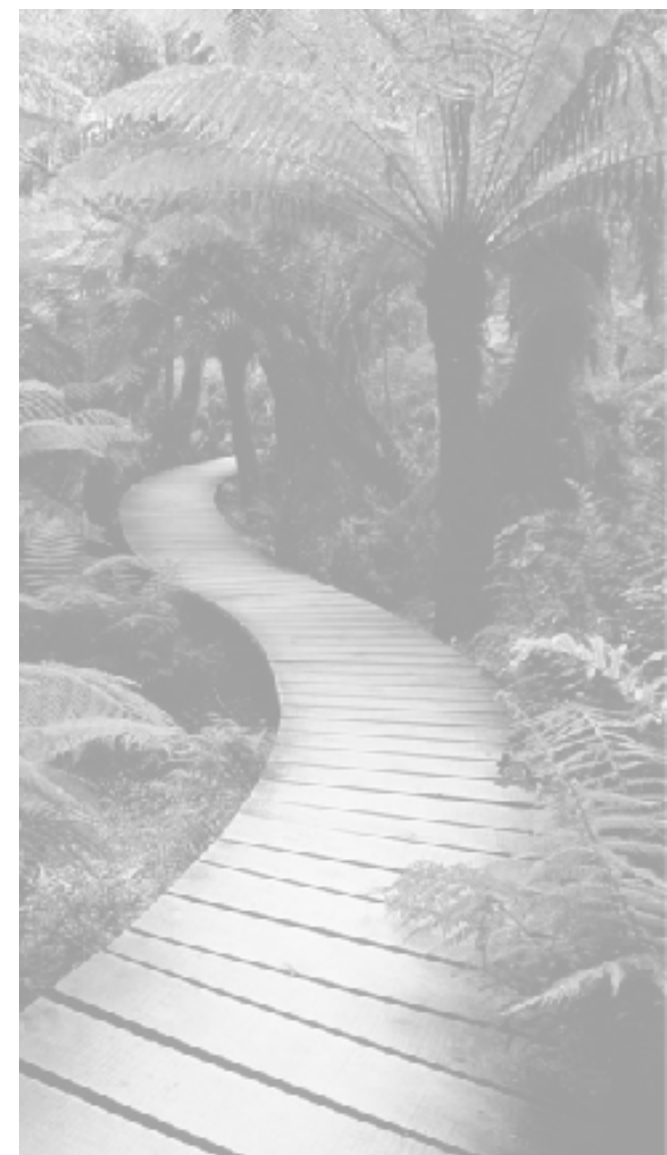
2.515.600 €

Formation house

1.875.000 €

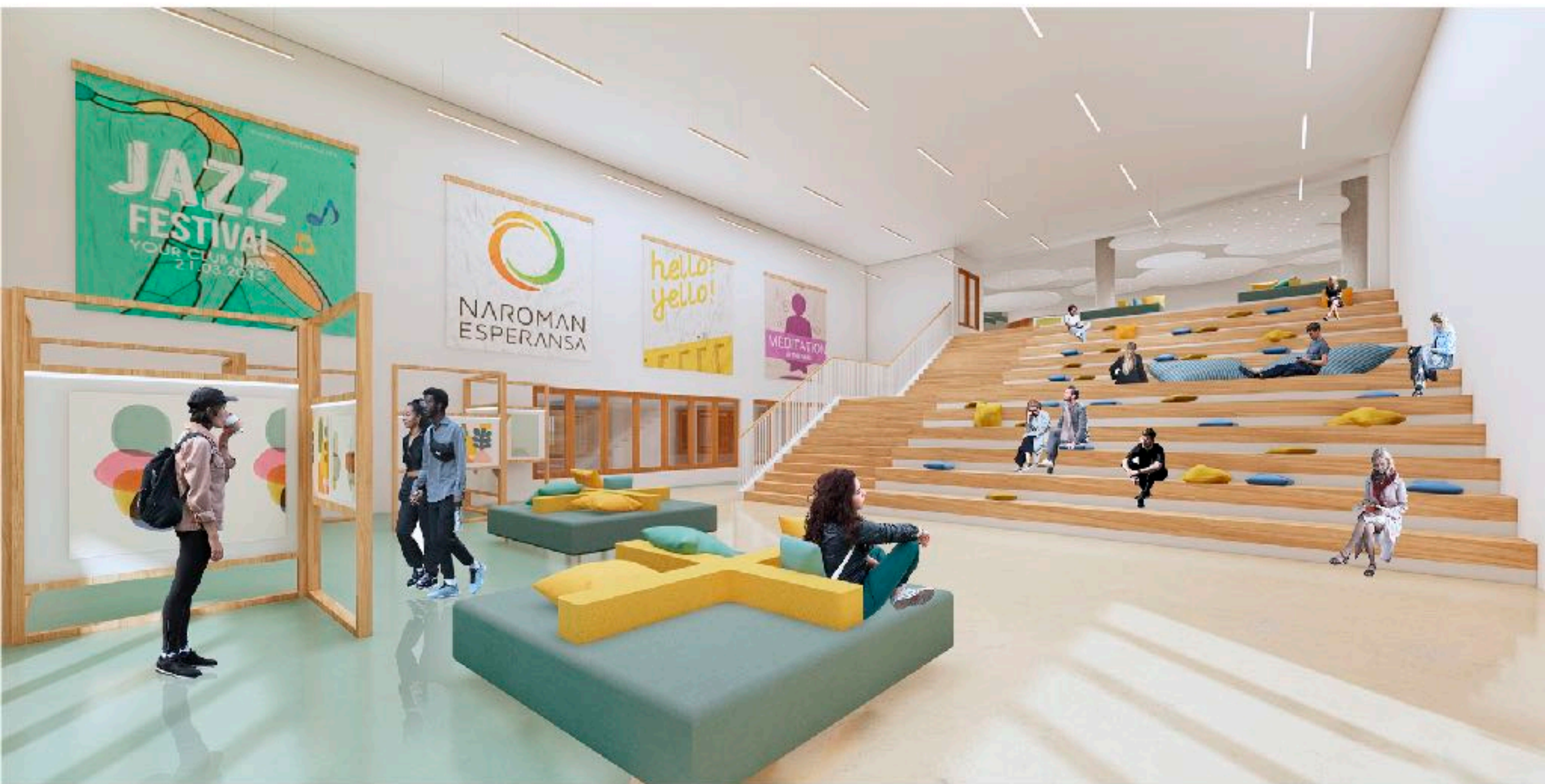
Chapel

580.000 €





## 04 - MAIN LOUNGE & FEATURE STAIRCASE



**Teachers Training College**



## 15 - DISCUSSION AREA



**Teachers Training College**



## 16 - LEARNING COMMONS



**Teachers Training College**



## 02 - GATHERING STAGE



Kindergarden



## 04 - LEARNING SUITE



Kindergarden



## 13 - COMMON ACTIVITIES



Kindergarden



## 09 - SAND PIT



Kindergarden



## BUILDINGS GENERAL VIEWS



: Kindergarten

: Teachers Training College